

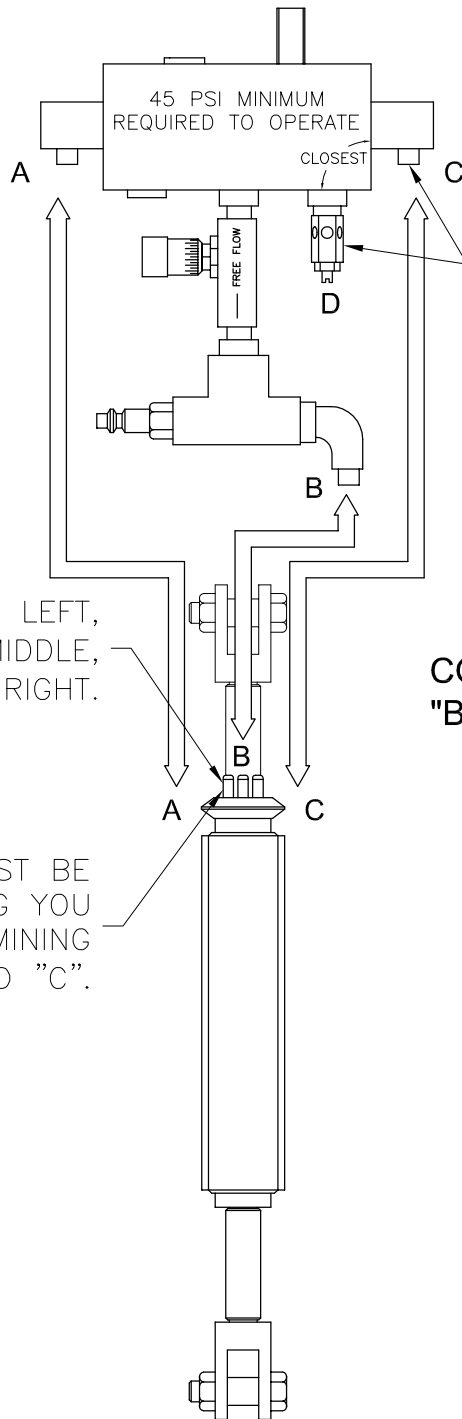
**NOTE: CARE MUST BE TAKEN TO PROPERLY ALIGN THE PARTS DURING ASSEMBLY. ADHESIVE IS APPLIED TO THE SMALL HOSE BARBS AND LUBRICANT IS APPLIED TO THE INSIDE OF THE BARREL SLEEVE. THREAD LOCKING LIQUID IS APPLIED TO #100 AND #240 10-24 SET SCREWS AND 10-32 BUTTON HEAD SCREWS.**

**PARTS LIST**

DESCRIPTION	PART NO.	QTY.	DESCRIPTION	PART NO.	QTY.
10. 3/8-16 LOCKNUT	301-01400	(2)	130. 1/16 ID TUBING	605-06002	2.13"
20. 3/8-16 X 1-1/2 HHCS	306-01213	(2)	130. 1/16 ID TUBING	605-06002	3.44"
30. BOLT SLEEVE	101-08001	(2)	140. 3-56 BARBED FITTING	605-06003	(3)
40. CLEVIS	106-05000	(2)	150. 3-56 FEMALE 3 WY TEE	605-06004	(1)
50. 1/8 X 1 ROLL PIN	301-01702	(2)	160. SUBMIN PSHBTN VALVE	605-06005	(2)
60. SHAFT	101-06012	(1)	170. VALVE MTNG. PLATE	105-06005	(2)
70. EXTERNAL SPACER	101-01814	(2)	180. COMPRESSION SPRING	605-06017	(2)
80. 10-32 PTC FITTING	605-06000	(3)	190. CENTRAL SPACER	105-01814	(1)
90. UPPER BODY	105-06000	(1)	200. LOWER BODY	105-06007	(1)
100. 10-24X1/4 SET SCREW	301-01720	(2)	210. SNAP HOOK	801-02700	(1)
110. 10-32 BARBED FITTING	605-06001	(3)	220. BARREL SLEEVE	105-06001	(1)
120. INTERNAL SPACER	101-01814	(2)	230. FOAM SLEEVE COVER	105-06002	(1)
130. 1/16 ID TUBING	605-06002	.81"	235. INSERT FOR GUIDE SLOT	105-06010	(1)
130. 1/16 ID TUBING	605-06002	1.13"	240. 10-32 X 1/4 BHCS	301-01316	(2)
130. 1/16 ID TUBING	605-06002	1.69"	250. ACTUATION PLATE	105-06006	(1)

# SINGLE ACTING SLIM-LINE SENSI-TOUCH CONTROL HOSE CONNECTIONS

REVISION DATE: 6-2-2003



**IMPORTANT:**  
HOSE FITTING "C" IS CLOSEST TO  
ADJUSTABLE MUFFLER "D".

"A" IS ON THE LEFT,  
"B" IS IN THE MIDDLE,  
"C" IS ON THE RIGHT.

**CONNECT "A" TO "A",  
"B" TO "B", AND "C" TO "C".**

HOSE FITTINGS MUST BE  
ON THIS SIDE, FACING YOU  
WHEN DETERMINING  
"A", "B", AND "C".

TRI-MOTION INDUSTRIES  
5688 W. CRENSHAW  
TAMPA, FL. 33634  
PH: (813) 884-6600  
FX: (813) 884-6800