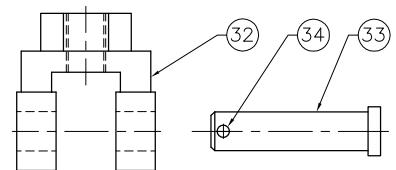
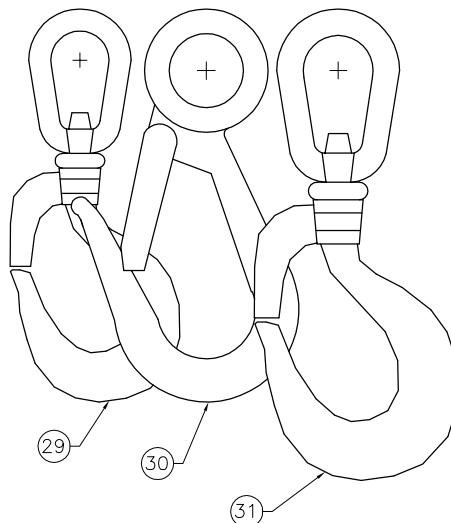
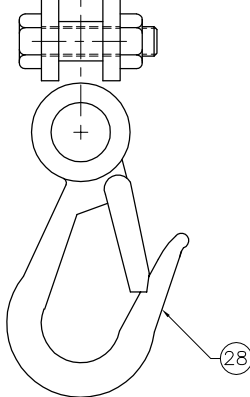


	DESCRIPTION	PART #	QTY
1.	3/8-16 LOCKNUT	301-01400	2
2.	3/8-16 X 1-1/2 BOLT	306-01213	2
3.	BOLT SLEEVE	101-08001	2
4.	CLEVIS	106-05000	2
*5.	1/8 X 1 ROLL PIN	301-01702	2
6.	THREADED ROD	101-06012	1
7.	TOP SPACER	101-01814	1
8.	3/8 COMPRESSION FITTING	601-06000	2
9.	UPPER BODY	101-06000	1
*10.	O-RING	401-00412	4
11.	METERING SPOOL	101-06002	2
12.	METERING PIN	101-06003	2
*13.	O-RING	401-04000	2
14.	10-32 X 1/4 BHCS	301-01316	2
15.	BODY CONNECTOR	101-06009	1
16.	PILOT WASHER	101-06004	2
*17.	SPRING	801-04211	2
18.	SPRING RETAINER	101-06005	2
*19.	RETAINING RING (E-CLIP)	301-01812	2
20.	LOWER BODY	101-06007	1
21.	10-24 X 1/4 SET SCREW	301-01720	1
22.	3/8 PIPE PLUG	602-04000	1
23.	BOTTOM SPACER	101-01815	1
24.	ADJUSTABLE MUFFLER	601-03001	1
25.	BARREL SLEEVE	101-06001	1
25a.	10-32 X 1/4 BHCS	301-01316	1
25b.	INSERT FOR GUIDE SLOT	101-06010	1
25c.	FOAM SLEEVE	102-06002	2
26.	1/4-20 X 1/4 BHCS	301-01600	1
27.	ACTUATOR PLATE	101-06006	1
28.	SNAP HOOK	801-02700	1
29.	OPTIONAL GATE HOOK	GH-4	1

THESE OPTIONS ARE FOR 600 LBS OR MORE

30.	LARGE SNAP HOOK	806-02700	1
31.	LARGE GATE HOOK	GH-7	1
32.	LARGE CLEVIS	106-05001	1
33.	LARGE CLEVIS PIN	DCP-96-03	1
34.	COTTER PIN	115-55003	1

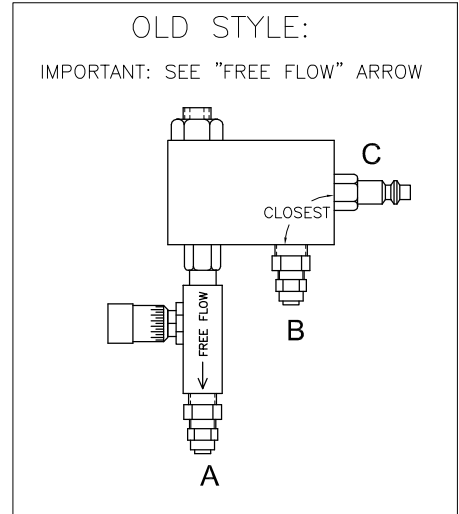
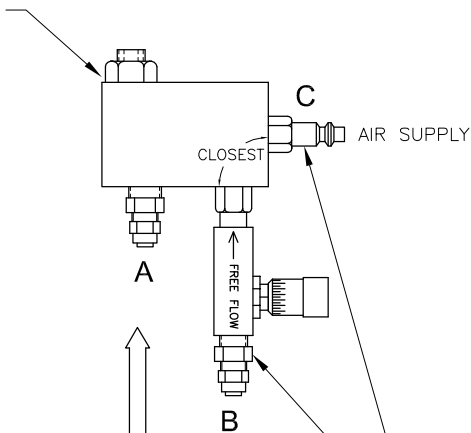
*PARTS IN 909-00065 REPAIR KIT



SENSI-TOUCH CONTROL HOSE CONNECTIONS

REVISION DATE: 6-2-2003

3/8" NPT FITTING
ON BAL-TROL
(AIR INPUT/OUTPUT
FOR RAISE/LOWER)

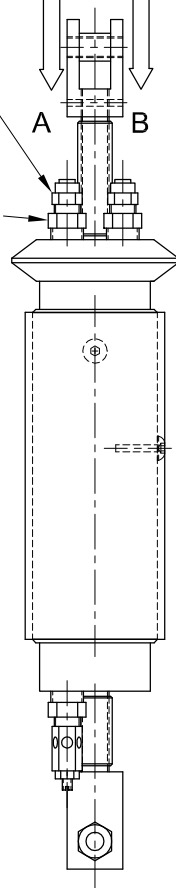


IMPORTANT:
HOSE FITTING "B" IS CLOSEST TO
AIR SUPPLY FITTING "C".

"A" IS ON THE LEFT,
"B" IS ON THE RIGHT.

HOSE FITTINGS MUST BE
ON THIS SIDE, FACING YOU
IN DETERMINING "A" AND "B".

**CONNECT "A" TO "A", AND "B" TO "B".
(2-BORE COILED HOSE NOT SHOWN
FOR CLARITY.)**



TRI-MOTION INDUSTRIES
5688 W. CRENSHAW
TAMPA, FL. 33634
PH: (813) 884-6600
FX: (813) 884-6800