

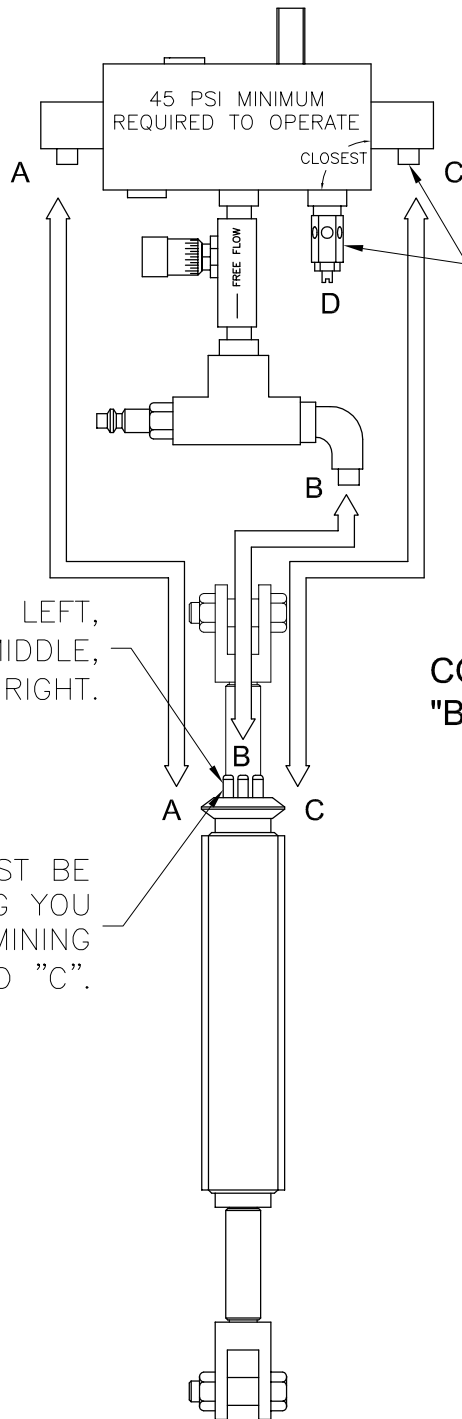
**NOTE: CARE MUST BE TAKEN TO PROPERLY ALIGN THE PARTS DURING ASSEMBLY. ADHESIVE IS APPLIED TO THE SMALL HOSE BARBS AND LUBRICANT IS APPLIED TO THE INSIDE OF THE BARREL SLEEVE.**

**PARTS LIST**

DESCRIPTION	PART NO.	QTY.	DESCRIPTION	PART NO.	QTY.
10. 3/8-16 LOCKNUT	301-01400	(2)	130. 1/16 ID TUBING	605-06002	2.13"
20. 3/8-16 X 1-1/2 HHCS	306-01213	(2)	130. 1/16 ID TUBING	605-06002	3.44"
30. BOLT SLEEVE	101-08001	(2)	140. 3-56 BARBED FITTING	605-06003	(3)
40. CLEVIS	106-05000	(2)	150. 3-56 FEMALE 3 WY TEE	605-06004	(1)
50. 1/8 X 1 ROLL PIN	301-01702	(2)	160. SUBMIN PSHBTN VALVE	605-06005	(2)
60. SHAFT	101-06012	(1)	170. VALVE MTNG. PLATE	105-06005	(2)
70. EXTERNAL SPACER	101-01814	(2)	180. COMPRESSION SPRING	605-06017	(2)
80. 10-32 PTC FITTING	605-06000	(3)	190. CENTRAL SPACER	105-01814	(1)
90. UPPER BODY	105-06000	(1)	200. LOWER BODY	105-06007	(1)
100. 10-24X1/4 SET SCREW	301-01720	(2)	210. SNAP HOOK	801-02700	(1)
110. 10-32 BARBED FITTING	605-06001	(3)	220. BARREL SLEEVE	105-06001	(1)
120. INTERNAL SPACER	101-01814	(2)	230. FOAM SLEEVE COVER	105-06002	(1)
130. 1/16 ID TUBING	605-06002	.81"	235. INSERT FOR GUIDE SLOT	105-06010	(1)
130. 1/16 ID TUBING	605-06002	1.13"	240. 10-24 X 1/4 BHCS	301-01316	(2)
130. 1/16 ID TUBING	605-06002	1.69"	250. ACTUATION PLATE	105-06006	(1)

# SINGLE ACTING SLIM-LINE SENSI-TOUCH CONTROL HOSE CONNECTIONS

REVISION DATE: 6-2-2003



**IMPORTANT:**  
HOSE FITTING "C" IS CLOSEST TO  
ADJUSTABLE MUFFLER "D".

"A" IS ON THE LEFT,  
"B" IS IN THE MIDDLE,  
"C" IS ON THE RIGHT.

**CONNECT "A" TO "A",  
"B" TO "B", AND "C" TO "C".**

HOSE FITTINGS MUST BE  
ON THIS SIDE, FACING YOU  
WHEN DETERMINING  
"A", "B", AND "C".

TRI-MOTION INDUSTRIES  
5688 W. CRENSHAW  
TAMPA, FL. 33634  
PH: (813) 884-6600  
FX: (813) 884-6800