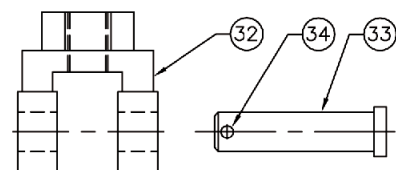


PARTS LIST

DESCRIPTION	PART NO.	QTY.
1. 3/8-16 LOCKNUT	301-01400	2
2. 3/8-16 X 1-1/2 BOLT	306-01213	2
3. BOLT SLEEVE	101-08001	2
4. CLEVIS	106-05000	2
5. 1/8 X 1 ROLL PIN *	301-01702	2
6. SHAFT	101-06012	1
7. TOP SPACER	101-01814	1
8. 3/8 COMP FITTING	601-06000	2
9. UPPER BODY	101-06000	1
10. O-RING *	401-00412	4
11. METERING SPOOL	101-06002	2
12. METERING PIN	101-06003	2
13. O-RING *	401-04000	2
14. 10-32 X 1/4 BHCS	301-01316	2
15. BODY CONNECTOR	101-06009	1
16. PILOT WASHER	101-06004	2
17. SPRING *	801-04211	2
18. SPRING RETAINER	101-06005	2
19. RETAINING RING * (E-CLIP)	301-01812	2
20. LOWER BODY	101-06007	1
21. 10-24 X 1/4 SET SCREW	301-01720	1
22. 3/8 PIPE PLUG	602-04000	1
23. BOTTOM SPACER	101-01815	1
24. ADJUST. MUFFLER	601-03001	1
25. BARREL SLEEVE	101-06001	1
26. 1/4-20 X 1/4 BHCS	301-01600	2
27. ACTUATOR PLATE	101-06006	1
28. SNAP HOOK	801-02700	1
29. OPTIONAL GATE HOOK	GH-4	1
FOAM COVER	102-06002	2
<i>THE FOLLOWING ARE REQUIRED FOR HEAVY LOADS ONLY (CLARIFY WITH WEIGHTS):</i>		
30. LARGE SNAP HOOK	806-02700	1
31. OPTION. LARGE GATE HOOK	GH-7	1
32. LARGE CLEVIS	106-05001	2
33. LARGE CLEVIS PIN	DCP-96-03	2
34. COTTER PIN	115-55003	1

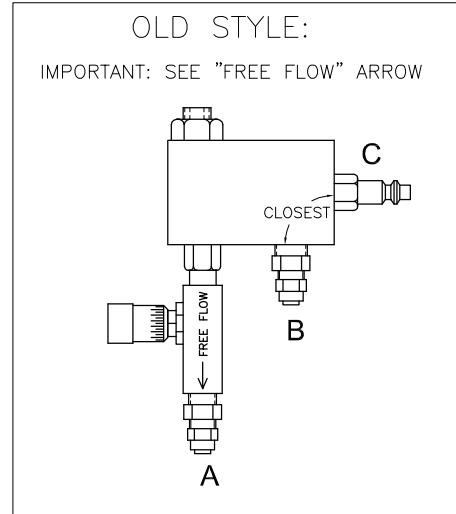
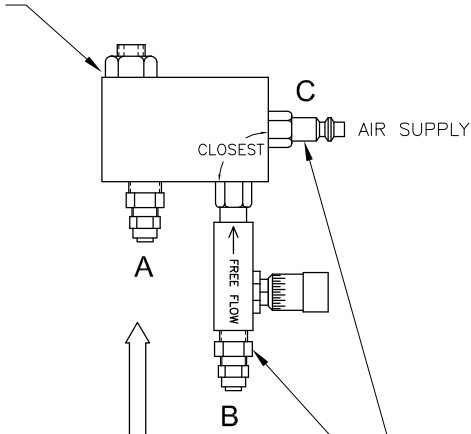
* PARTS IN 909-00065 REPAIR KIT



SENSI-TOUCH CONTROL HOSE CONNECTIONS

REVISION DATE: 6-2-2003

3/8" NPT FITTING
ON BAL-TROL
(AIR INPUT/OUTPUT
FOR RAISE/LOWER)

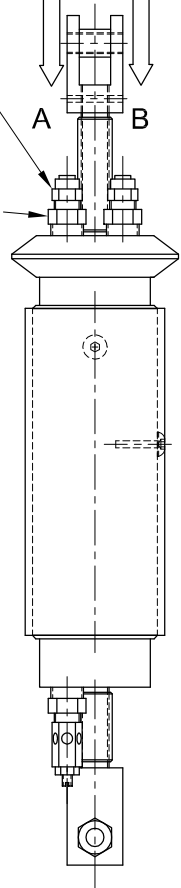


IMPORTANT:
HOSE FITTING "B" IS CLOSEST TO
AIR SUPPLY FITTING "C".

"A" IS ON THE LEFT,
"B" IS ON THE RIGHT.

HOSE FITTINGS MUST BE
ON THIS SIDE, FACING YOU
IN DETERMINING "A" AND "B".

**CONNECT "A" TO "A", AND "B" TO "B".
(2-BORE COILED HOSE NOT SHOWN
FOR CLARITY.)**



TRI-MOTION INDUSTRIES
5688 W. CRENSHAW
TAMPA, FL. 33634
PH: (813) 884-6600
FX: (813) 884-6800