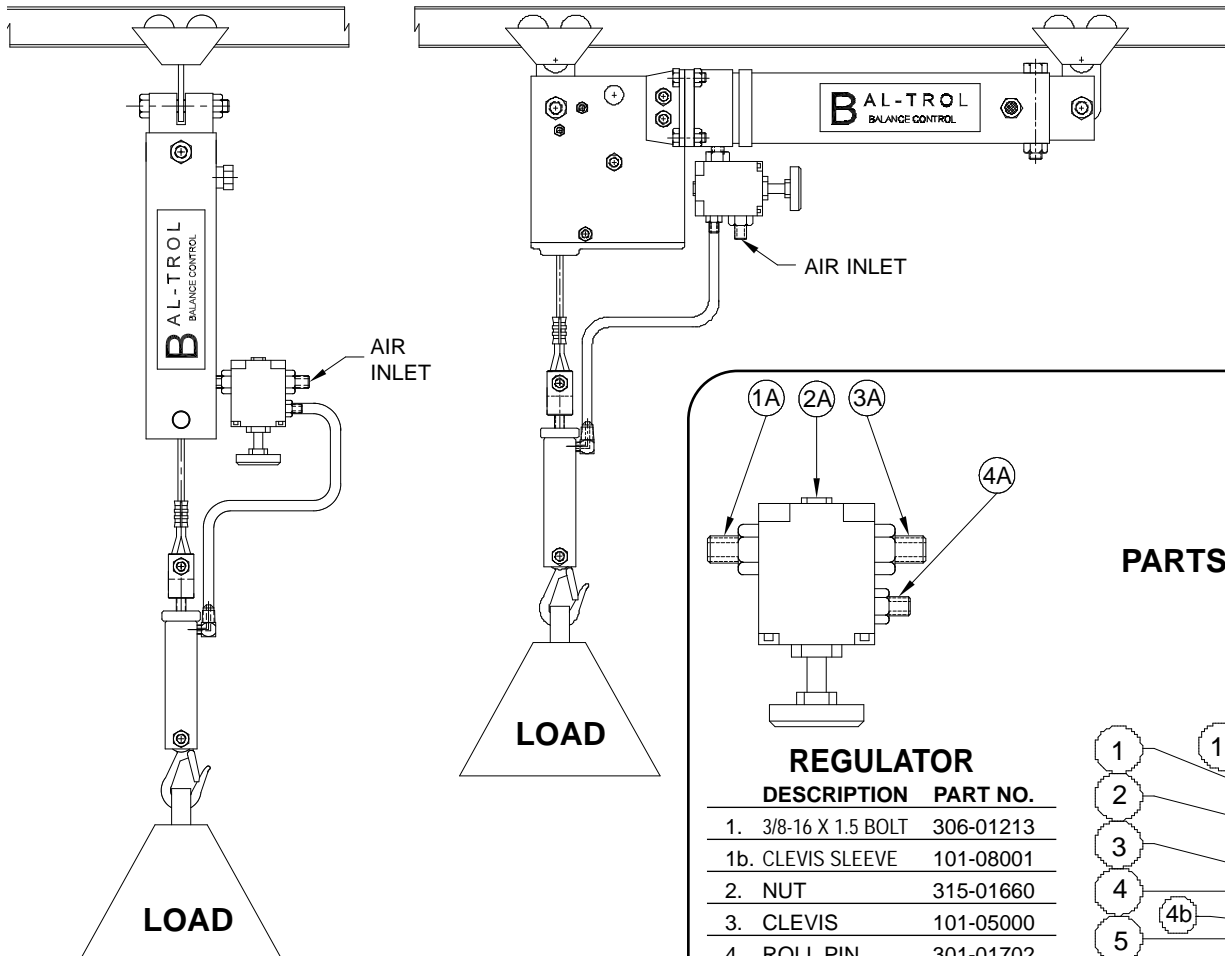
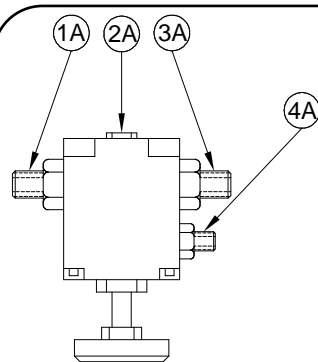


HORIZONTAL AND VERTICAL MODELS



1. Attach load to be balanced to safety lifting hook.
2. Connect control line hose to balancer control regulator connection and servo-bleed connection.
3. Be sure that the control regulator is set at minimum setting, (turn adjusting knob fully counter-clockwise).
4. Connect lubricated, filtered and regulated air supply to the air inlet.
5. Adjust servo-bleed control adjustment knob clockwise as viewed from the top, until resistance is felt.
6. Adjust control regulator knob clockwise to increase air pressure into balancer until load rises or a constant air signal is bleeding from the servo-bleed.
7. Further increase of air supply pressure and/or adjustment of servo bleed control knob will provide a smooth, sensitive state of balance through the entire range of lifting-lowering travel.

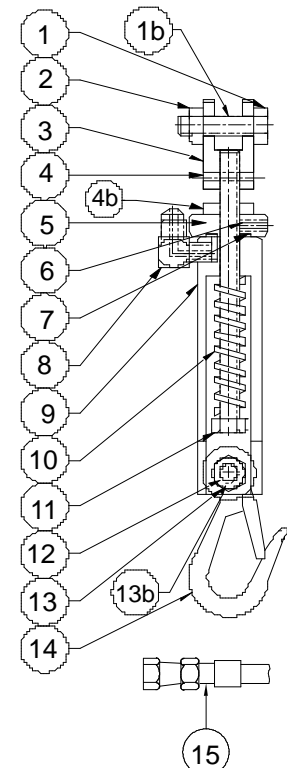


REGULATOR

DESCRIPTION	PART NO.
1. 3/8-16 X 1.5 BOLT	306-01213
1b. CLEVIS SLEEVE	101-08001
2. NUT	315-01660
3. CLEVIS	101-05000
4. ROLL PIN	301-01702
4b. NUT	301-01730
5. KNURLED NUT	101-05011
6. SET SCREW	301-01720
7. SEAL	401-05000
8. COMP. FITTING	601-05003
9. SML SERVO BODY	101-05010
10. SPRING	801-04202
11. 3/8-24 X 5.5 BOLT	301-01228
12. 3/8-16 X 1.75 BOLT	301-01229
13. 3/8-16 STOVER NUT	301-01400
13b. BOTTOM SLEEVE	101-08002
14. SNAP HOOK	801-02700
15. HOSE ASSY.	901-05020
1A. REDUCER	60X-0300X
2A. REGULATOR	801-05011
3A. CHECK VALVE	601-05000
4A. COMP. FITTING	601-05001

Q Only used on models built before 8/19/02

PARTS LIST



SERVO