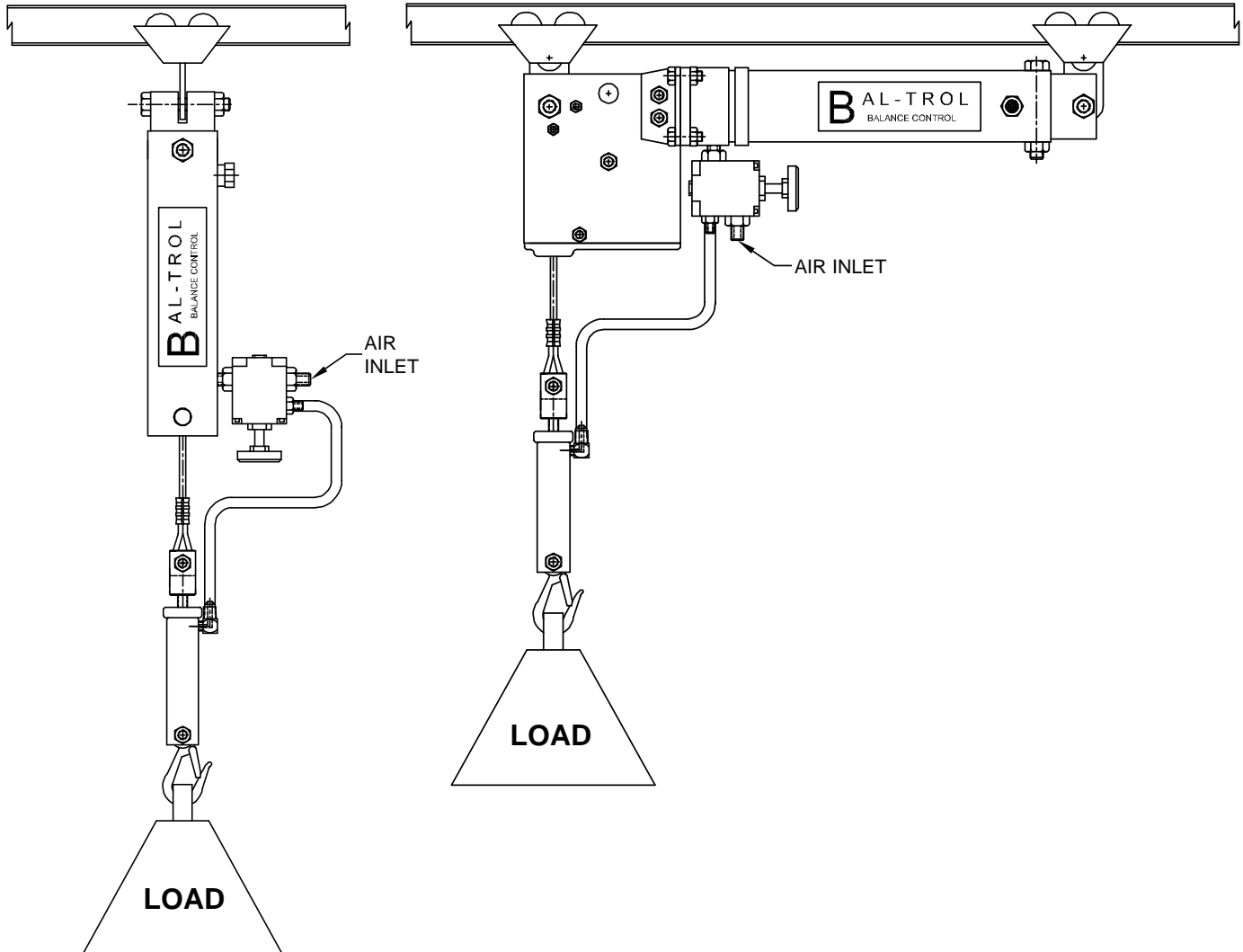


HORIZONTAL AND VERTICAL MODELS



1. Attach load to be balanced to safety lifting hook.
2. Connect control line hose to balancer control regulator connection and servo-bleed connection.
3. Be sure that the control regulator is set at minimum setting, (turn adjusting knob fully counter-clockwise).
4. Connect lubricated, filtered and regulated air supply to the air inlet.
5. Adjust servo-bleed control adjustment knob clockwise as viewed from the top, until resistance is felt.
6. Adjust control regulator knob clockwise to increase air pressure into balancer until load rises or a constant air signal is bleeding from the servo-bleed.
7. Further increase of air supply pressure and/or adjustment of servo-bleed control knob will provide a smooth, sensitive state of balance through the entire range of lifting-lowering travel.